



**TOUR OF THE
SOUTHERN
HIGHLANDS**



CREWGUIDE

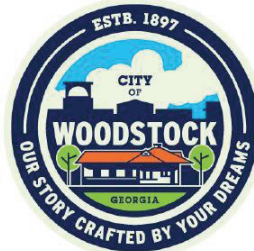
**FEBRUARY 28-MARCH 1
2020**

This is a LIVE document and subject
to change leading up to the event start.



THANK YOU TO OUR GENEROUS SPONSORS AND PARTNERS

Because they support the Tour of the Southern Highlands, please support them in return.



Tara Daigle
REALTOR®
404-925-6351
She *knows* Woodstock!



Friday, February 28, 2020
**Downtown Woodstock Criterium
 ToSH Prologue**

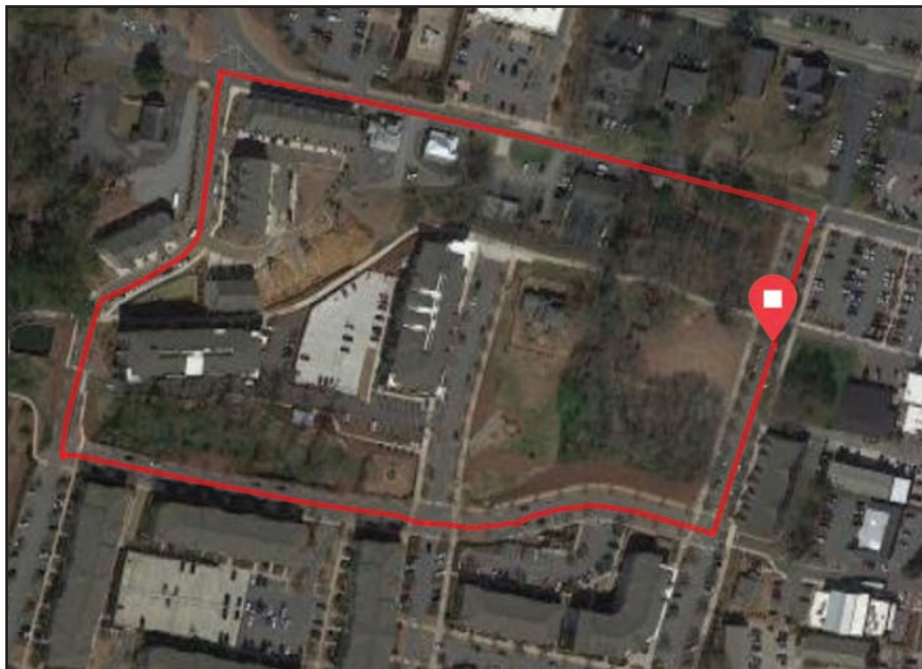
The Event Green • 8640 Market Street, Woodstock, GA 30188

MEN P1, INV. II, ELITE JUNIOR MEN & WOMEN'S P1/II/III, ELITE

| START | CATEGORY | DURATION |
|---------|--------------------------------|------------|
| 6:30 PM | Women's P1,2,3/Elite Jr. Women | 45 Minutes |
| 7:30 PM | Elite Jr. Men | 45 Minutes |
| 6:30 PM | Men's P1, INV 2 | 60 Minutes |

COURSE DESCRIPTION

The Downtown Woodstock Criterium course is a .6 mile, four corner course. Start/Finish in front of the Woodstock Event Green, on Market St, and travel clock-wise to Maple, taking a right on Paden, then a Right on Mill. Be prepared, there's a little hill on Mill.



DIRECTIONS and PARKING:

From Interstate 575, take exit 8, Towne Lake Parkway and head east on Towne Lake. See above map for course location and public parking, if you are arriving to pick-up your packet. If you are racing, there is limited team parking inside the course (see above), prior to course closure at 6pm.

PACKET and TIMING CHIP-PICKUP:

If weather is fair, packet & timing chip pickup will be located on the Event Green, inside the crit course. Poor weather packet & chip pickup will take place inside the Elm Street Cultural Arts Center Village, near the most northern public parking on map above.

IF A SIGN SAYS NO PARKING, DON'T PARK THERE!

Don't be that guy. Getting caught parking where prohibited will get your vehicle towed.

KOM Points and Sprint Time Bonus

Information coming soon.

Saturday, February, 2020
Ball Ground Circuit Race
ToSH Stage 3/AM Stage 1

Mineral Springs Road/Valley Street @ Beck Street, Ball Ground, GA 30107

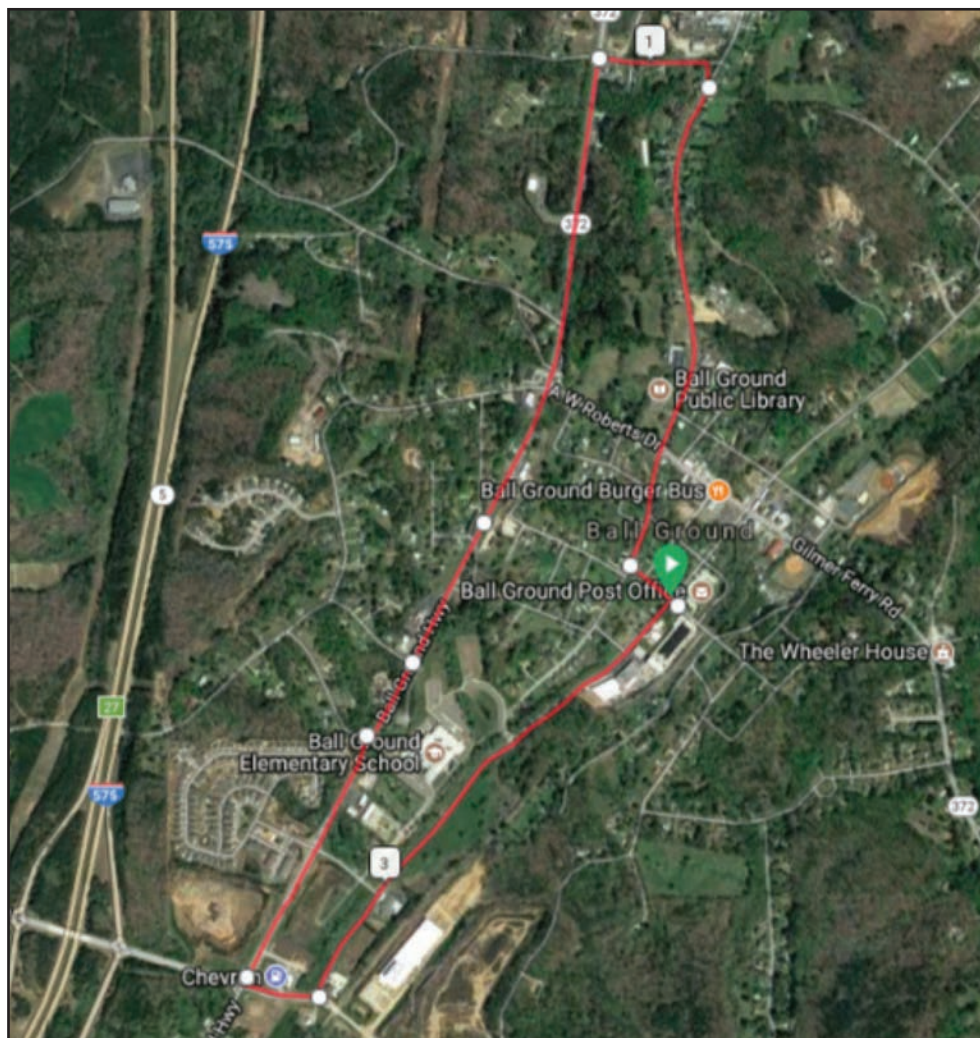
| START | CATEGORY | LAPS | INTERMEDIATE SPRINT @ END OF |
|----------|-------------------------|---------|------------------------------|
| 8:00 AM | Women 3/4/5 | 5 laps | Lap 2, 4 |
| 8:50 AM | Juniors 13-14 | 4 laps | Lap 2, 4 |
| 9:40 AM | Men IV/V | 5 laps | Lap 2, 4 |
| 10:40 AM | Masters 40+ | 6 laps | Lap 2, 4 |
| 12:10 PM | Juniors 15-16, 17-18 | 8 laps | Lap 2, 4 |
| 1:40 PM | Men II/III | 8 laps | Lap 2, 4 |
| 3:00 PM | PI/II (invit III) Women | 8 laps | Lap 2, 4 |
| 4:30 PM | PI (invit II) Men | 10 laps | Lap 2, 4 |

DIRECTIONS The staging for ToSH Stage 3 is at the same location as Stage 1.

PARKING Utilize same parking as Stage 1, please follow guidance given by parking volunteers

COURSE The Circuit race course is an ~4 mile, of mostly flat to easy rolling terrain. Most sections of the course are open to traffic, please ride with caution and obey the center-line rule.

No KOM points are awarded for the Ball Ground Circuit Race. The wearer of the KOM jersey following the TT will maintain the jersey into the Road Race.



Sunday, March 1, 2020
High Country Road Race
ToSH Stage 4

321 Valley Street, Ball Ground, GA 30107

| START | CATEGORY | LAPS/DISTANCE | KOM | OnEdge SPRINT POINTS |
|----------|----------------------------------|---------------|-------------|----------------------|
| 8:15 AM | Juniors 15-16, 17-18 | 5/75 miles | Lap 2, 4 | Lap 1, 3 |
| 8:20 AM | Women PI/II/III / Jr Elite Women | 5/75 miles | Lap 2, 4 | Lap 1, 3 |
| 8:25 AM | Women 3/4/5 | 3/45 miles | Lap 2 | Lap 1 |
| 10:50 AM | Masters 40+ | 4/60 miles | Lap 2 | Lap 1, 3 |
| 11:55 AM | Men PI/II | 6/90 miles | Lap 2, 4, 6 | Lap 1, 3 |
| 12:30 PM | Juniors 13-14 | 1/15 miles | Lap 1 | NA |
| 1:40 PM | Men II/III | 4/60 miles | Lap 2, 4 | Lap 1, 3 |
| 1:50 PM | Men IV/V | 3/45 miles | Lap 2 | Lap 1 |

DIRECTIONS Follow Saturday's directions

PARKING In addition to parking for Saturday (shown on Page 3), Sunday parking includes the U.S. Post Office at Valley & Depot Street.

BIKE PARKING You are responsible for the care of your bike. Don't leave your bike in the roadway or leaning against a vehicle facing the road. That is dumb. Vehicles passing are looking for people on bikes, and other vehicles, not bikes without riders.

COURSE 15 mile loop, (see map), of rolling terrain with a 2 challenging climbs, and a false flat finish up Valley Street. Centerline rule is in effect for nearly all of the course, and offenders will be disqualified. The course is open to traffic. Please ride with caution. All categories follow the same course

KOM All categories have the same KOM, which begins at ~mile 12 on Howell Bridge Road, and lasts ~.8 mile, with an elevation gain of ~300ft

START/FINISH Located on Valley Street approximately 100 meters south of Beck Street and the Ball Ground City Hall.

STAGING/SIGN-IN AREA All Riders must sign in at the Ball Ground City Hall at least 20 minutes prior to their scheduled start time. Sign-in sheets will be retrieved by officials 20 minutes before each cat/class scheduled start time. (approx 100 m past the start/finish line) Any rider presenting themselves at the sign-in, or on the start line having not signed in on time, will be given a time penalty/and or a monetary fine. Staging will be located at Beck and Valley Street

WHEEL SUPPORT Support is wheels in and wheels out for the amateur races. All wheels must be tagged with the rider's number & category. Wheels need to be in the vehicles, or the assigned wheel pit, 30 minutes prior to the scheduled start time. Once the wheel vehicles are considered full, by the Wheel Support Coordinator, NO MORE WHEELS ARE ALLOWED. Neutral support for the Pro Men & Women fields may be provided. There is no race caravan for this race. Dingo Race Productions is NOT responsible for lost or damaged wheels.

FEED ZONE There will be no feeding on the first two laps. FEEDING BEGINS ON LAP 3! There will be no feeding on the last lap. Feeding will be allowed only in races over 30 miles. The Feed Zone is located along Valley Drive before the finish line.

FEED ZONE PARKING: ON SUNDAY Closest parking to feed zone is located in The US Post Office Parking lot just above the course at Valley and Depot and 255 Depot Street.

TIME CUT For the P12 Men & Women, the time cut is the winner's time, plus 15%. The time cut for all other categories is the winner's time plus 15%. Additionally, Any rider who is lapped will be considered outside the time cut and eliminated. Riders who are about to be lapped will be informed by race referee(s) that they have failed to make the time cut. Riders so informed, shall proceed back to the staging area, WITHOUT crossing the finish line.

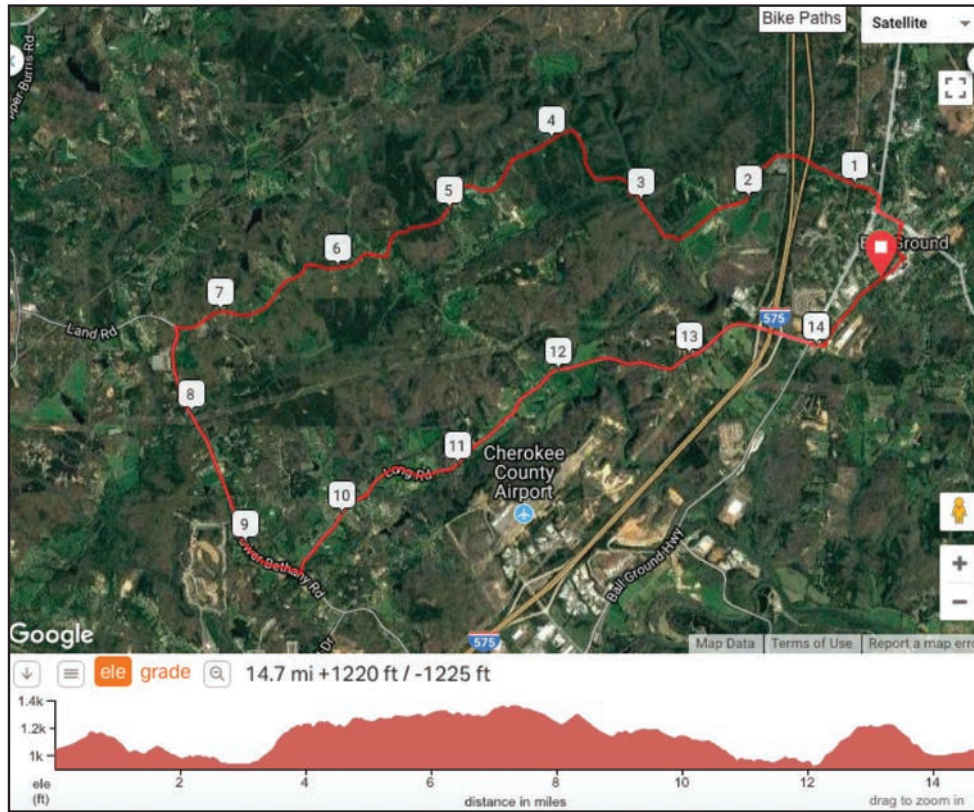
KOM & SPRINTS Contested consistent with the number of times you have crossed the designated line. For example: the Lap 2 KOM will be awarded the 2nd time you cross the KOM line. Likewise for Hot Spot Sprints, which are contested at the Start/Finish line. A lap 3 Hot Spot Sprint will be contested at the completion of the 3rd lap.

JUNIOR ROLLOUT All junior riders must complete a pre-RR rollout located at the staging area. Only riders that had an in-race wheel change are required to complete a post-RR rollout. Report to an Official and the rollout will be done on the road behind the finish line. Riders must use extreme caution collapse back after they finish to complete their rollout. DO NOT RIDE BACKWARDS ON THE COURSE!

TIMING CHIP RETURN FOLLOWING COMPLETION OF STAGE 3. Any timing chips not returned following completion of Stage 3 will be charged \$75, unless immediate arrangements are made for return.

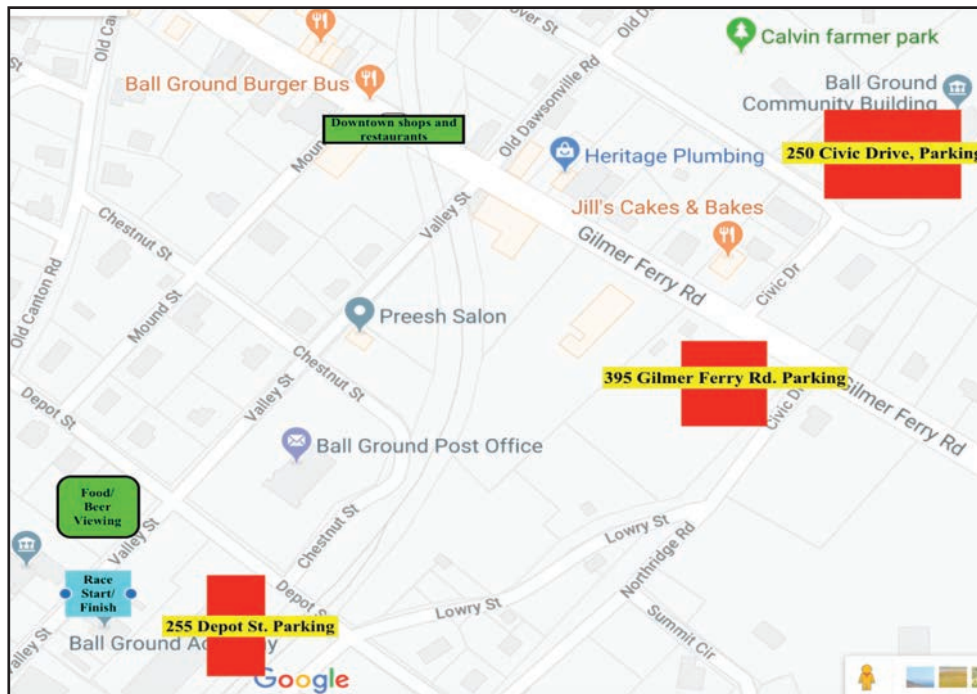
PLEASE BE RESPECTFUL GUESTS AND DO NOT LITTER!

High Country Road Race Course and Profile



High Country Road Race Course

Saturday and Sunday Parking, Finish Line, and Spectator Parking



NO PARKING IN THE ELEMENTARY SCHOOL THIS YEAR!

Places of Interest in Cherokee County, Georgia

Welcome to Cherokee County, Georgia. Below is a list of establishments to help make your visit enjoyable.

CONVENIENT HOTELS

| | |
|---|--|
| EconoLodge** EconoLodge ToSH special rate link. | 138 Keith Drive, Canton 30114 (770) 345-1994 |
| Fairfield Inn | 455 Parkway 575, Woodstock, GA 30188 (770)-926-4669 |
| Comfort Inn & Suites | 340 Parkway 575, Woodstock, GA 30188 (770) 517-9650 |
| Holiday Inn Express | 1470 Woodstock Pkwy, Woodstock, GA 30188 (770) 592-4438 |

WOODSTOCK RESTAURANTS & BREWERY

All of these restaurants and others are within walking distance of each other in [Downtown Woodstock.](#)

| | |
|-------------------------------------|------------------------|
| Fire Stone Wood Fired Pizza & Grill | Truck & Tap |
| Salt Factory Pub | Canyons Burger Company |
| Freight Kitchen & Tap | Pure Taqueria |
| Reel Seafood | Reformation Brewery |

BALL GROUND RESTAURANTS & ESTABLISHMENTS

All of these restaurants and others are within walking distance of each other in [Downtown Ball Ground.](#)

| | |
|---|---------------------------|
| Ball Ground Burger Bus | Pueblo Grill Mexican Food |
| Les Bon Temps Louisiana Kitchen | Barrel House Coffee |
| Frankfurt Döner and Meats | Jill's Cakes & Bakes |
| Chef Rosario's Kitchen | Dominic's Truck & Dine |
| Two Brothers Bar-B-Que 1695 Old Canton Rd, Ball Ground, GA 30107 (up the road a bit) | |

TO DO IN AND AROUND BALL GROUND

| | |
|------------------------|------------------------------------|
| Martin's General Store | 340 Gilmer Ferry Road, Ball Ground |
| Perched Boutique | 275 Gilmer Ferry Road, Ball Ground |
| Red Bowtique | 215 Gilmer Ferry Road, Ball Ground |